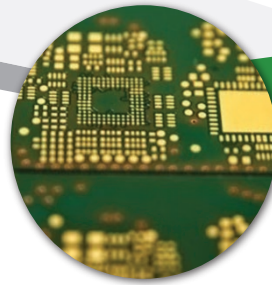


B SERIES XRF

High Precision Coating
Measurement System



What's Distinctive:
Exceptional performance in an entry-level XRF



Who Benefits

The B Series desktop XRF is best suited to customers who have:

- › Relatively low sample testing volumes
- › Larger samples that require only one test location per part
- › Large PCBs that require simple spot checks per lot of new material
- › Budget restrictions with desire to upgrade components at a later date
- › The need to meet the requirements of IPC-4552

Key Features

The B Series is Bowman's most basic top-down measurement configuration. The sample stage is a fixed base plate; operators place parts into the chamber and use a video image to align the desired location within the guides on the screen.

Configuration

The standard configuration includes a single fixed collimator; the camera has a fixed focal distance. An SDD detector is included, along with our long-life micro-focus x-ray tube. As with all Bowman benchtop XRFs, instruments can be upgraded to include multiple collimators or a variable focal camera.

BOWMAN

1105 Remington Rd.
Schaumburg, IL 60173

› 847.781.3523
› www.bowmanxrf.com
› sales@bowmanxrf.com

© Copyright 2022 Bowman



Made
in the USA



BOWMAN B SERIES XRF

Superior technically.
Supported locally.

Specifications

X-ray Excitation

50 W (50kV and 1mA) micro-focused W anode tube

Detector

Silicon solid state detector with 190eV resolution or better

Focal Depth

Fixed focal depths with laser (optional multi focal)

Video Magnification

30x Micro: Standard
55x Micro: Optional
7x Digital Zoom: Standard

Working Environment:

50°F (10°C) to 104°F (40°C) and up to 98% RH, non-condensing

Weight

34kg

Programmable XY:

Table size: Not Available
Travel: Not Available

Element Range

Aluminum 13 to Uranium 92

Analysis layers and elements

5 layers (4 layers + base) and 10 elements in each layer.
Composition analysis of up to 25 elements simultaneously

Filters/Collimators

4 primary filters / single fixed collimator

Digital Pulse Processing

4096 CH digital multi-channel analyser with flexible shaping time. Automatic signal processing including dead time correction and escape peak correction

Processor:

Intel, CORE i5 3470 (3.2GHz), 8GB DDR3 Memory, Microsoft Windows 10 Prof, 64bit equivalent

Camera optics:

1/4" CMOS-1280x720 VGA resolution

Power Supply:

150W, 100~240 volts; frequency range 47Hz to 63Hz

Dimensions (HxWxD):

Internal: 140mm (5.5"), 310mm (12"), 335mm (13")
External: 450mm (18"), 450mm (18"), 600mm (24")

The Bowman Partner Network

Bowman's Partner Service Network was established to facilitate large multi-national projects in the PCB industry. Today, it has become the model for XRF technical service worldwide, serving board shops, electronics manufacturers, automotive and aerospace OEMs, jewelry manufacturers, and contract metal finishers in all sectors.

The Bowman Partner Network enables XRF technical service experts worldwide to provide same-day response to every service, repair and upgrade requirement.



Bowman global partners are certified annually, and maintain the highest standards of excellence and best practices.



Made
in the USA

BOWMAN

1105 Remington Rd.
Schaumburg, IL 60173

› 847.781.3523
› www.bowmanxrf.com
› sales@bowmanxrf.com

© Copyright 2022 Bowman