

BOWMAN

Coating Measurement Instruments

G SERIES XRF

High Precision Coating
Measurement System



Robust XRF measurement, tailored to small sample sizes

What's Distinctive:

Who Benefits

The G Series desktop XRF is best suited to customers who have:

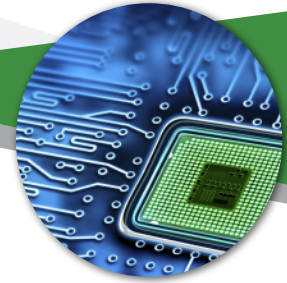
- › Relatively low sample testing volumes
- › A new XRF testing requirement from a customer or supplier
- › The need for jewelry or other precious metal analysis
- › Limited benchtop space
- › Budget limitations

Key Features

The G Series is Bowman's most cost-effective XRF instrument. It is a robust system with no moving parts. It has a bottom-up measurement geometry, which makes it different from all other Bowman Series. Samples are placed onto a clear window and positioned using the live video camera image. The sample stage can be manually adjusted to focus the camera on the exact area to be measured. The small chamber and footprint are well suited for jewelry and other precious metal applications.

Configuration

The standard configuration includes a single fixed collimator, a fixed focus camera, a solid-state PIN detector and a long-life micro-focus x-ray tube. As with all Bowman models, components can be upgraded to include multiple collimators, a variable focal camera, or an SDD detector.



BOWMAN

1125 Remington Rd.
Schaumburg, IL 60173

› 847.781.3523
› www.bowmanxrf.com
› sales@bowmanxrf.com



Made
in the USA

© Copyright 2018 Bowman



BOWMAN G SERIES XRF

Superior technically.
Supported locally.

Specifications

X-ray Excitation

50 W (50kV and 1mA) micro-focused W anode tube

Detector

Silicon solid state detector with 190eV resolution or better

Focal Depth

Single fixed focal depths with laser

Video Magnification

30x: Standard

45x: Optional

Working Environment:

50°F (10°C) to 104°F (40°C) and up to 98% RH, non-condensing

Weight

25kg

Programmable XY:

Table size: Not Available

Travel: Not Available

Element Range

Aluminum 13 to Uranium 92

Analysis layers and elements

5 layers (4 layers + base) and 10 elements in each layer.

Composition analysis of up to 25 elements simultaneously

Filters/Collimators

4 primary filters / single fixed collimator

Digital Pulse Processing

4096 CH digital multi-channel analyser with flexible shaping time. Automatic signal processing including dead time correction and escape peak correction

Processor:

Intel, CORE i5 3470 (3.2GHz), 8GB DDR3 Memory, Microsoft Windows 10 Prof, 64bit equivalent

Camera optics:

1/4" CMOS-1280x720 VGA resolution

Power Supply:

150W, 100~240 volts; frequency range 47Hz to 63Hz

Dimensions (HxWxD):

Internal: 125mm (5"), 380mm (15"), 300mm (12")

External: 400mm (16"), 400mm (16"), 380mm (15")

The Bowman Partner Network

Bowman's Partner Service Network was established to facilitate large multi-national projects in the PCB industry. Today, it has become the model for XRF technical service worldwide, serving board shops, electronics manufacturers, automotive and aerospace OEMs, jewelry manufacturers, and contract metal finishers in all sectors.

The Bowman Partner Network enables XRF technical service experts worldwide to provide same-day response to every service, repair and upgrade requirement.



Bowman global partners are certified annually, and maintain the highest standards of excellence and best practices.



© Copyright 2018 Bowman



Made
in the USA

BOWMAN

1125 Remington Rd.
Schaumburg, IL 60173

› 847.781.3523
› www.bowmanxrf.com
› sales@bowmanxrf.com